

HK-SV280M-(P)(A)-NT

8.0 Megapixel Infrared light Network HD Camera

AcuSense Key Features

※ 1/2.7"SC8239 Black light illumination CMOS sensor;3840*2160@15fps; ;

Color 0.0001Lux@F1.2,black/white 0.0001Lux@F1.2

※ H.265A1/H.265+(Compatible with H.265/H.264)Support dual stream

AVI;0.1M~8Mbps variable;1~30f/s variable

※ Alarm I/O: 1/0 (support alarm input and video link to background)

※ Supporting human detection and tripping line detection, and supports intelligent functions such as customized face detection, number statistics, etc

※ Support 2D/3D noise reduction,digital wide dynamic



※ 30 IR LED, Night Vision Up to 35M

※ 2.8/4/6/8mm fixed lens

※ DC 12V power supply (customizable Poe power supply)

※ Provide real-time security via built-in two-way audio

※ Active strobe light and audio alarm to warn intruders off

※ Support ONVIF;access third party, Support various mobile monitoring(iPhone,Android)

※ Provide web、CMS、center platform management software MYEYE,provide SDK development

※ Support cloud technology,easy to achieve network penetration,fro in-line and alarm information pushed

Reasons for choosing

9 upgrade features to meet monitoring needs



Wire supply



Day and night switching



Infrared night vision



Strobe Light and Audio



Two Way Audio



Cell phone remote



30 meters infrared



Water and dust proof



Install portable

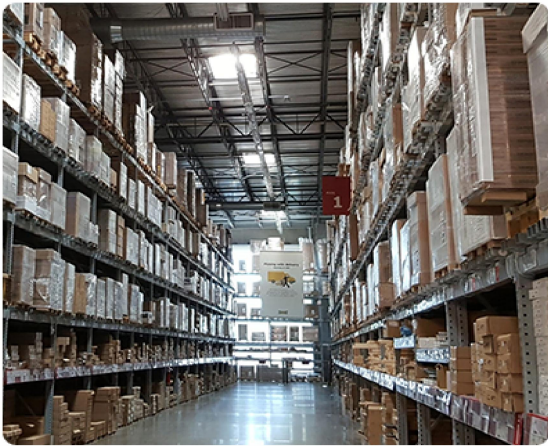
Intelligent alert depth learning algorithm

Support for regional intrusion detection, cross-border detection, to break through the warning line warning of the target, and push to the mobile phone alert.



Application scenario

Can Be widely used in warehouses, schools, shops, community entrances and exits and other places.



Warehouse



School



Shops



Access to the compound

Cell phone remote

Multi-terminal support for MOBILE/TABLET/PC

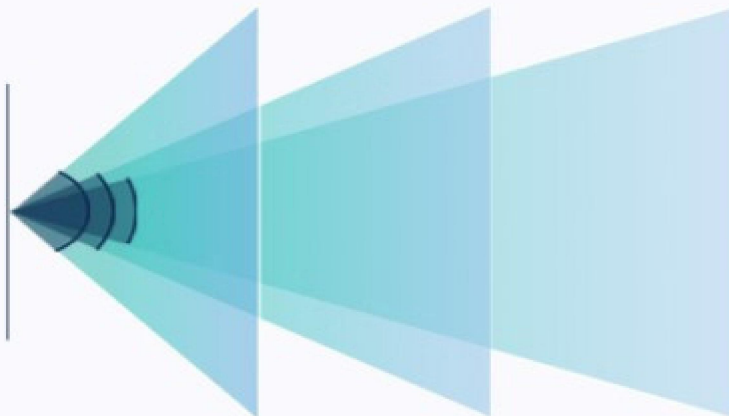
Monitor your home from time to time



Multi-focal length optional

Dual seal handling supports waterproof and dustproof

Easy to handle rain and snow weather indoors and outdoors



| | | | |
|--------------------------------|--------|-------|-------|
| Lens size | 2.8mm | 4mm | 6mm |
| Surveillance Angle | 114.6° | 89.1° | 54.4° |
| Identification Distance | 4M | 7M | 13M |



Focal length : 2.8MM Angle of view : 114.6°



Focal length : 4MM Angle of view : 86.2°



Focal length : 6MM Angle of view : 54.4°

More features (support for customization)



Built in Microphone



Two Way Audio



POE



WLAN



SD

More products (optional)



Specification

| Model | | HK-SV280M-(P)(A)-NT |
|---------------------|------------------------|--|
| Camera | Image Sensor | 1/2.7"SC8239 Black light illumination CMOS sensor |
| | DSP | NT98566 |
| | Min. Illumination | Color: 0.001Lux/F1.2, B/W: 0.0001Lux/F1.2; 0Lux/F1.2(IR on) |
| | Effective Pixels | 3840(H)x2160(V) |
| | Scanning System | Progressive |
| | Shutter | 1/50(1/60)s to 1/10,000s |
| | Noise reduction | Support 2D/3D |
| | Wide dynamic | Support digital |
| Camera Features | Max. IR LEDs Length | 30-35m (30pcs IR LED) |
| | Day/Night | Auto(ICR)/Color/B/W |
| | Backlight Compensation | BLC / HLC / DWDR |
| | White Balance | Auto |
| | Gain Control | Auto/Manual |
| | Alarm triggered | Motion Detection, occlusion alarm, anomaly |
| | SMART event | Perimeter breach detected |
| | Intelligence analysis | Supporting human detection and tripping line detection |
| Lens | Focal Length | 2.8/4/6/8mm fixed lens (Optional) |
| | Max Aperture | F1.6 |
| | Focus Control | Fixed |
| Video | Video compression | H.265A/H.265+(Compatible with H.265/H.264),support dual stream,AVI;0.1M~8Mbps variable;1~30f/s variable |
| | Resolution | 5MP(2592*1944)1080P(1920*1080) / 720P(1280*720) ; D1(704*576)/ CIF(352*288) |
| | Main Stream | 1080P/720P(1 ~ 25fps) |
| | Sub Stream | D1/CIF(1 ~ 25fps) |
| | Bit Rate | H.265 < H.264: 32K ~ 8192Kbps, MJPEG: 32K ~ 20480Kbps |
| Network | Network interface | 1*RJ45 10/100M adaptive Ethernet port; support RTSP/FTP/DHCP/NTP/UPnP etc |
| | Protocol | IPv4/IPv6, HTTP, HTTPS, SSL, TCP/IP, UDP, UPnP, ICMP, IGMP, SNMP, RTSP, RTP, SMTP, NTP, DHCP, DNS, PPPOE, DDNS, FTP, IP Filter, QoS, Bonjour |
| | ONVIF | Support |
| | Max. User Access | 10 users |
| | Smart Phone | iPhone, iPad, Android, Windows Phone |
| | Client port | VMS/CMS; XMeyey |
| Auxiliary Interface | Memory Slot | N/A |
| | Alarm | Active strobe light and audio alarm to warn intruders off |
| | Audio | Provide real-time security via built-in two-way audio |
| General | Power Supply | DC 12V power supply (customizable Poe power supply) |
| | Power Consumption | <8W |
| | Working Environment | -30°C~+60°C, 10%~90% |
| | Ingress Protection | IP67 |
| | Dimensions | 200*200*200mm |
| | Weight | 1.2Kg |