

HK-SAT220M-(P)(A)-XM

2.0 Megapixel Infrared Light Network HD Dome Camera

AcuSense Key Features

※ 1/2.8" IMX307 Black light illumination CMOS sensor;1920*1080@25fps

Color 0.0001Lux@F1.2,black/white 0.0001Lux@F1.2

※ H.265A1/H.265+(Compatible with H.265/H.264)Support dual stream

AVI;0.1M~8Mbps variable;1~30f/s variable

※ Alarm I/O: 1/0 (support alarm input and video link to background)

※ Supporting human detection and tripping line detection, and supports intelligent functions such as customized face detection, number statistics, etc

※ Support 2D/3D noise reduction,digital wide dynamic



※ 30 IR LED, Night Vision Up to 35M

※ 2.8/4/6/8mm fixed lens

※ DC 12V power supply (customizable Poe power supply)

※ Provide real-time security via built-in two-way audio

※ Active strobe light and audio alarm to warn intruders off

※ Support ONVIF;access third party, Support various mobile monitoring(iPhone,Android)

※ Provide web、CMS、center platform management software MYEYE,provide SDK development

※ Support cloud technology,easy to achieve network penetration,fro in-line and alarm information pushed

Reasons for choosing

9 upgrade features to meet monitoring needs



Wire supply



Day and night switching



Infrared night vision



Strobe Light and Audio



Two Way Audio



Cell phone remote



30 meters infrared



Water and dust proof



Install portable

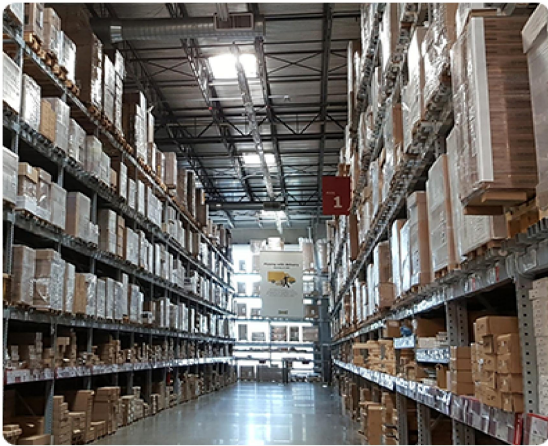
Intelligent alert depth learning algorithm

Support for regional intrusion detection, cross-border detection, to break through the warning line warning of the target, and push to the mobile phone alert.



Application scenario

Can Be widely used in warehouses, schools, shops, community entrances and exits and other places.



Warehouse



School



Shops



Access to the compound

Cell phone remote

Multi-terminal support for MOBILE/TABLET/PC

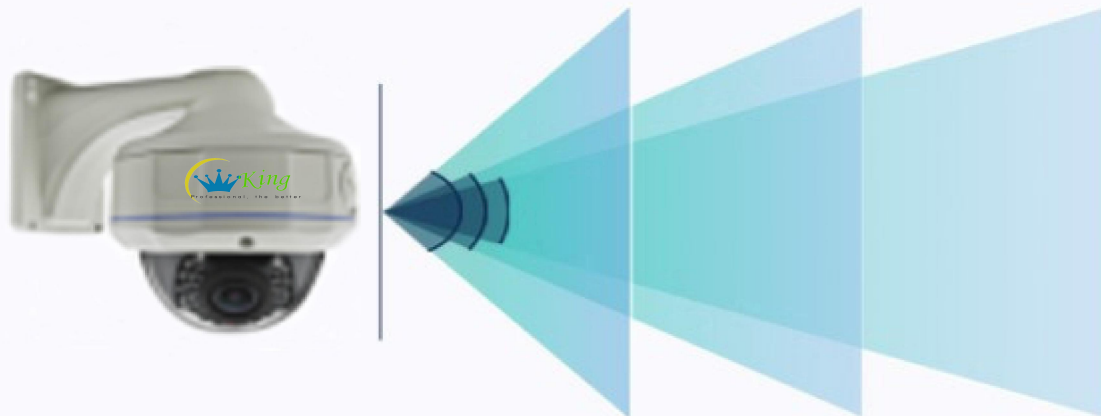
Monitor your home from time to time



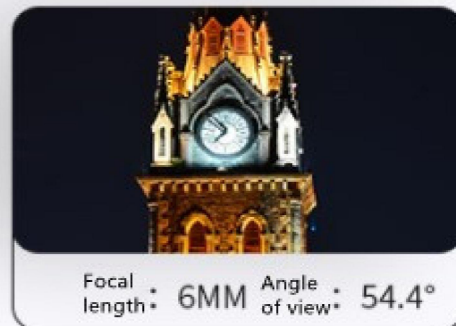
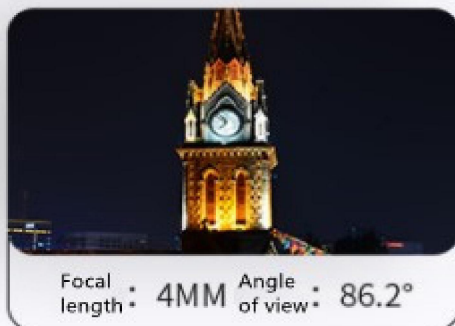
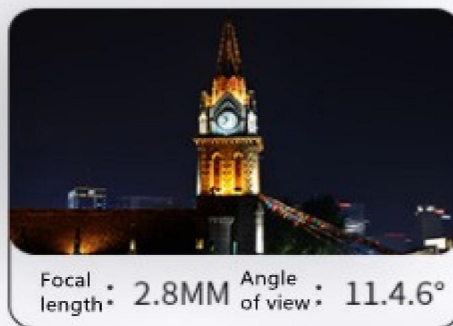
Multi-focal length optional

Dual seal handling supports waterproof and dustproof

Easy to handle rain and snow weather indoors and outdoors



Lens size	2.8mm	4mm	6mm
Surveillance Angle	114.6°	89.1°	54.4°
Identification Distance	4M	7M	13M



More features (support for customization)



Built in Microphone



Two Way Audio



POE



WLAN



SD

More products (optional)



Specification

Model		HK-SAT220M-(P)(A)-XM
Camera	Image Sensor	1/2.8" IMX307 Black light illumination CMOS sensor
	DSP	XM530AI
	Min. Illumination	Color: 0.001Lux/F1.2, B/W: 0.0001Lux/F1.2; 0Lux/F1.2(IR on)
	Effective Pixels	1920(H)x1080(V)
	Scanning System	Progressive
	Shutter	1/50(1/60)s to 1/10,000s
	Noise reduction	Support 2D/3D
	Wide dynamic	Support digital
Camera Features	Max. IR LEDs Length	30-35m (30pcs IR LED)
	Day/Night	Auto(ICR)/Color/B/W
	Backlight Compensation	BLC / HLC / DWDR
	White Balance	Auto
	Gain Control	Auto/Manual
	Alarm triggered	Motion Detection, occlusion alarm, anomaly
	SMART event	Perimeter breach detected
	Intelligence analysis	Supporting human detection and tripping line detection
Lens	Focal Length	2.8/4/6/8mm fixed lens (Optional)
	Max Aperture	F1.6
	Focus Control	Fixed
Video	Video compression	H.265AI/H.265+(Compatible with H.265/H.264),support dual stream,AVI;0.1M~8Mbps variable;1~30f/s variable
	Resolution	1080P(1920*1080) / 720P(1280*720) ; D1(704*576)/ CIF(352*288)
	Main Stream	1080P/720P(1 ~ 25fps)
	Sub Stream	D1/CIF(1 ~ 25fps)
	Bit Rate	H.265 < H.264: 32K ~ 8192Kbps, MJPEG: 32K ~ 20480Kbps
Network	Network interface	1*RJ45 10/100M adaptive Ethernet port; support RTSP/FTP/DHCP/NTP/UPnP etc
	Protocol	IPv4/IPv6, HTTP, HTTPS, SSL, TCP/IP, UDP, UPnP, ICMP, IGMP, SNMP, RTSP, RTP, SMTP, NTP, DHCP, DNS, PPPOE, DDNS, FTP, IP Filter, QoS, Bonjour
	ONVIF	Support
	Max. User Access	10 users
	Smart Phone	iPhone, iPad, Android, Windows Phone
	Client port	VMS/CMS; XMeyey
Auxiliary Interface	Memory Slot	N/A
	Alarm	Active strobe light and audio alarm to warn intruders off
	Audio	Provide real-time security via built-in two-way audio
General	Power Supply	DC 12V power supply (customizable Poe power supply)
	Power Consumption	<8W
	Working Environment	-30°C~+60°C, 10%~90%
	Ingress Protection	IP67
	Dimensions	300*300*300mm
	Weight	1.5Kg