

# HK-HB220-(P)(A)-XM

## 2 MP ColorVu fixed lens Network Camera

ColorVu

### Key Features

※ 1/2.8"IMX307 Black light illumination CMOS sensor;1920\*1080@25fps

Color 0.0001Lux@F1.2,black/white 0.0001Lux@F1.2

※ H.265AI/H.265+(Compatible with H.265/H.264)Support dual stream

AVI;0.1M~8Mbps variable;1~30f/s variable

※ Alarm I/O: 1/0 (support alarm input and video link to background)

※ Supporting human detection and tripping line detection, and supports intelligent functions such as customized face detection, number statistics, etc

※ Support 2D/3D noise reduction,digital wide dynamic



※ 2pcs White Light LED,24/7 colorful imaging Up to 30M

※ 2.8/4/6/8mm fixed lens

※ DC 12V power supply (customizable Poe power supply)

※ Customizable audio and two-way Voice (Built-in Power Amplifier Board and Speaker)

※ IP67

※ Support ONVIF;access third party, Support various mobile monitoring(iPhone,Android)

※ Provide web、CMS、center platform management software MYEYE,provide SDK development

※ Support cloud technology,easy to achieve network penetration,fro in-line and alarm information pushed

# Reasons for choosing

9 upgrade features to meet monitoring needs



# Starlit night vision

The best  
night vision



Star level cameras don't require infrared or fill lamps, and can display clear color surveillance at night with a light source. Below is a comparison of infrared night vision and starlight night vision.



Infrared night

Starry night

## Camera aging box

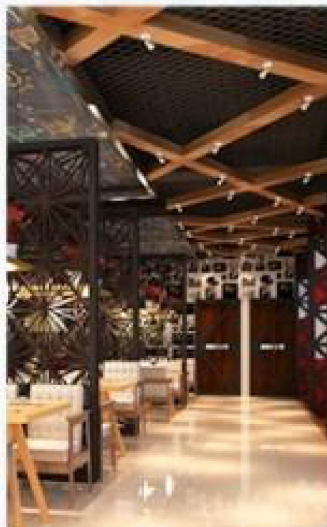
Each camera requires a rigorous aging time of more than 24 hours



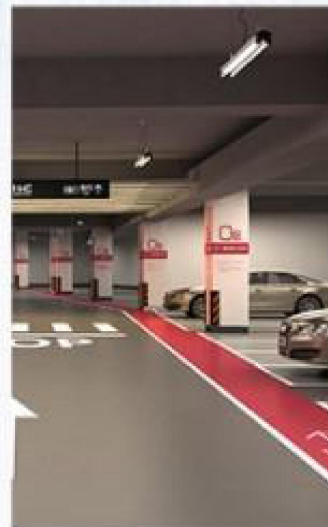
Suitable for various environment, Wall Mounting & Lifting



Warehouse



Restaurants

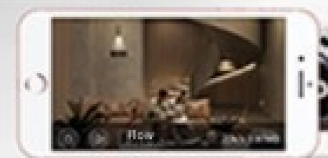
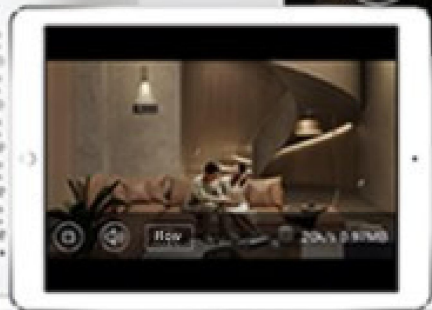


Garages

# Cell phone remote

Multi-terminal support for MOBILE/TABLET/PC

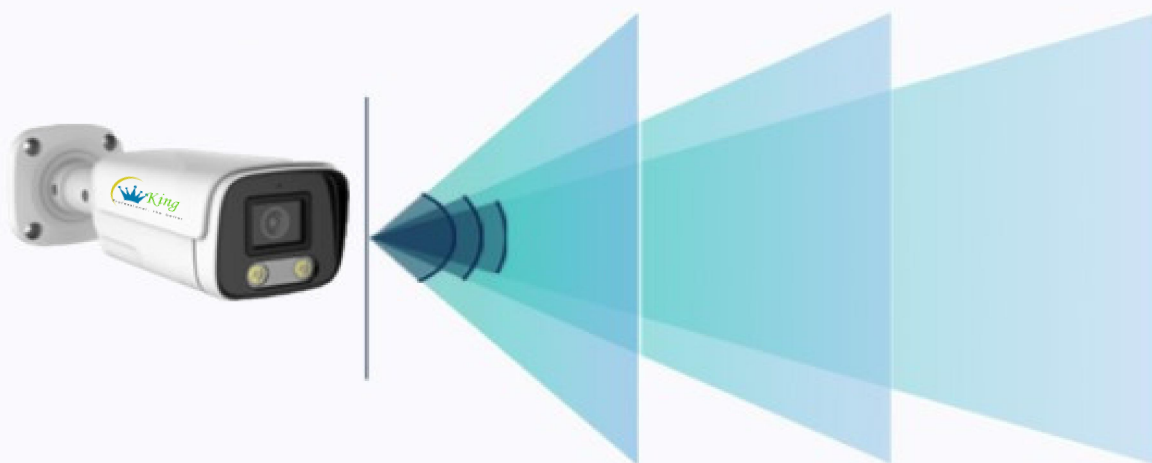
Monitor your home from time to time



# Multi-focal length optional

Dual seal handling supports waterproof and dustproof

Easy to handle rain and snow weather indoors and outdoors



Lens size	2.8mm	4mm	6mm
Surveillance Angle	114.6°	89.1°	54.4°
Identification Distance	4M	7M	13M



Focal length : 2.8MM Angle of view : 114.6°



Focal length : 4MM Angle of view : 86.2°



Focal length : 6MM Angle of view : 54.4°

## More features (support for customization)



Built in Microphone



Two Way Audio



POE

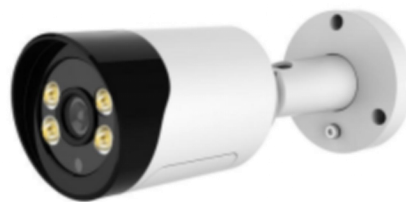


WLAN



SD

## More products (optional)





## Specification

Model		HK-HB220-(P)(A)-XM
Camera	Image Sensor	1/2.8" IMX307 Black light illumination CMOS sensor
	Min. Illumination	Color: 0.001Lux/F1.2, B/W: 0.0001Lux/F1.2; 0Lux/F1.2(IR on)
	Effective Pixels	1920(H)x1080(V)
	Scanning System	Progressive
	Shutter	1/50(1/60)s to 1/10,000s
	Noise reduction	Support 2D/3D
	Wide dynamic	Support digital
Camera Features	Max. IR LEDs Length	10-30m (2pcs White Lights LED)
	Day/Night	24/7 Color imaging
	Backlight Compensation	BLC / HLC / DWDR
	White Balance	Auto
	Gain Control	Auto/Manual
	Alarm triggered	Motion Detection, occlusion alarm, anomaly
	SMART event	Perimeter breach detected
	Intelligence analysis	Supporting human detection and tripping line detection
Lens	Focal Length	2.8/4/6/8mm fixed lens (Optional)
	Max Aperture	F1.6
	Focus Control	Fixed
Video	Video compression	H.265A/H.265+(Compatible with H.265/H.264),support dual stream,AVI;0.1M~8Mbps variable;1~30f/s variable
	Resolution	1080P(1920*1080) / 720P(1280*720) ; D1(704*576)/ CIF(352*288)
	Main Stream	1080P/720P(1 ~ 25fps)
	Sub Stream	D1/CIF(1 ~ 25fps)
	Bit Rate	H.265 < H.264: 32K ~ 8192Kbps, MJPEG: 32K ~ 20480Kbps
Network	Network interface	1*RJ45 10/100M adaptive Ethernet port; support RTSP/FTP/DHCP/NTP/UPnP etc
	Protocol	IPv4/IPv6, HTTP, HTTPS, SSL, TCP/IP, UDP, UPnP, ICMP, IGMP, SNMP, RTSP, RTP, SMTP, NTP, DHCP, DNS, PPPoE, DDNS, FTP, IP Filter, QoS, Bonjour
	ONVIF	Support
	Max. User Access	10 users
	Smart Phone	iPhone, iPad, Android, Windows Phone
	Client port	VMS/CMS; XMeye
Auxiliary Interface	Memory Slot	N/A
	Alarm	N/A
	Audio	Optional
General	Power Supply	DC 12V power supply (customizable Poe power supply)
	Power Consumption	<8W
	Working Environment	-30°C~+60°C, 10%~90%
	Ingress Protection	IP67
	Dimensions	194*102*98mm
	Weight	0.4Kg

# Dimensions

