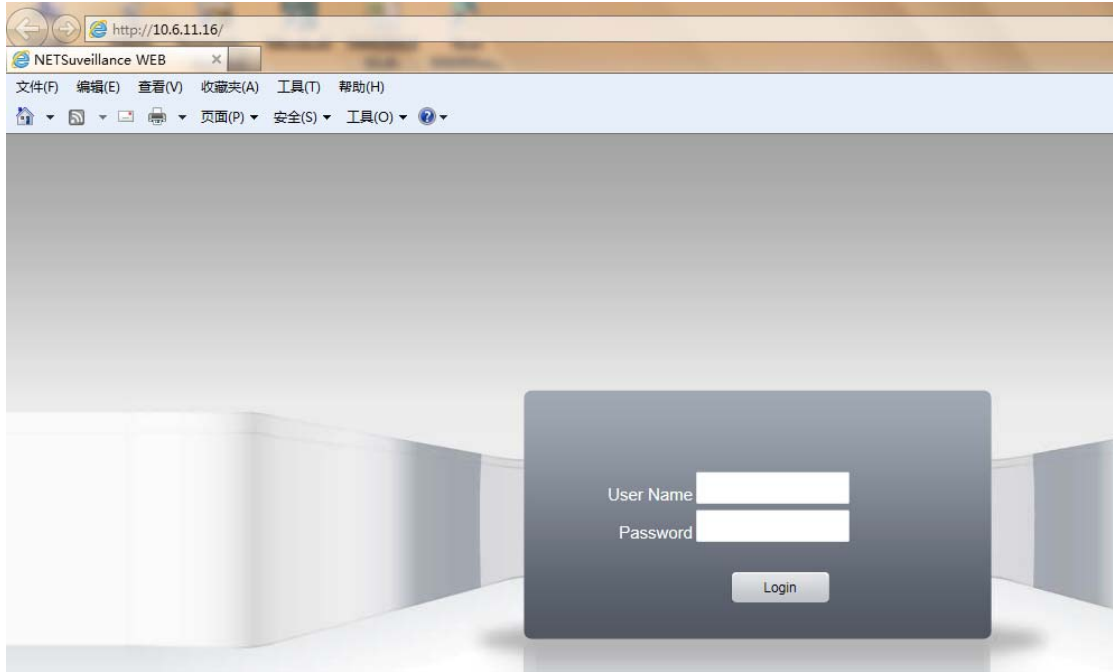


Catalogue

1. IE Web Log In	2
2. IE Web Page Introduction	3
2.1 Monitoring Channel	3
2.2 Monitoring Window shift	4
2.3 Shortcut Keys Operation	4
2.4 Audio Settings	4
2.5 Color Settings/ Other Settings	4
2.6 PTZ Control Panel	5
2.6.1 PTZ Direction	6
2.6.2 PTZ Step Length	6
2.6.3 Video Display Control	6
2.6.4 Preset Point	6
2.6.5 Cruise Between Points	7
2.7 Syetem Menu	7
2.7.1 Playback	8
2.7.2 Log	11
2.7.3 Device Configuration	12
2.7.3.1 Video Recording	13
2.7.3.2 Alarm	14
2.7.3.3 System Settings	15
2.7.3.4 Management Tools	16
2.7.3.5 System Information	16
2.7.4 Client side Configuration	17
2.7.4.1 Alarm Setting	17
2.7.4.2 System Setting	19
2.7.4.3 About	19
2.7.5 Exit	20
2.8 Voice Intercom	20

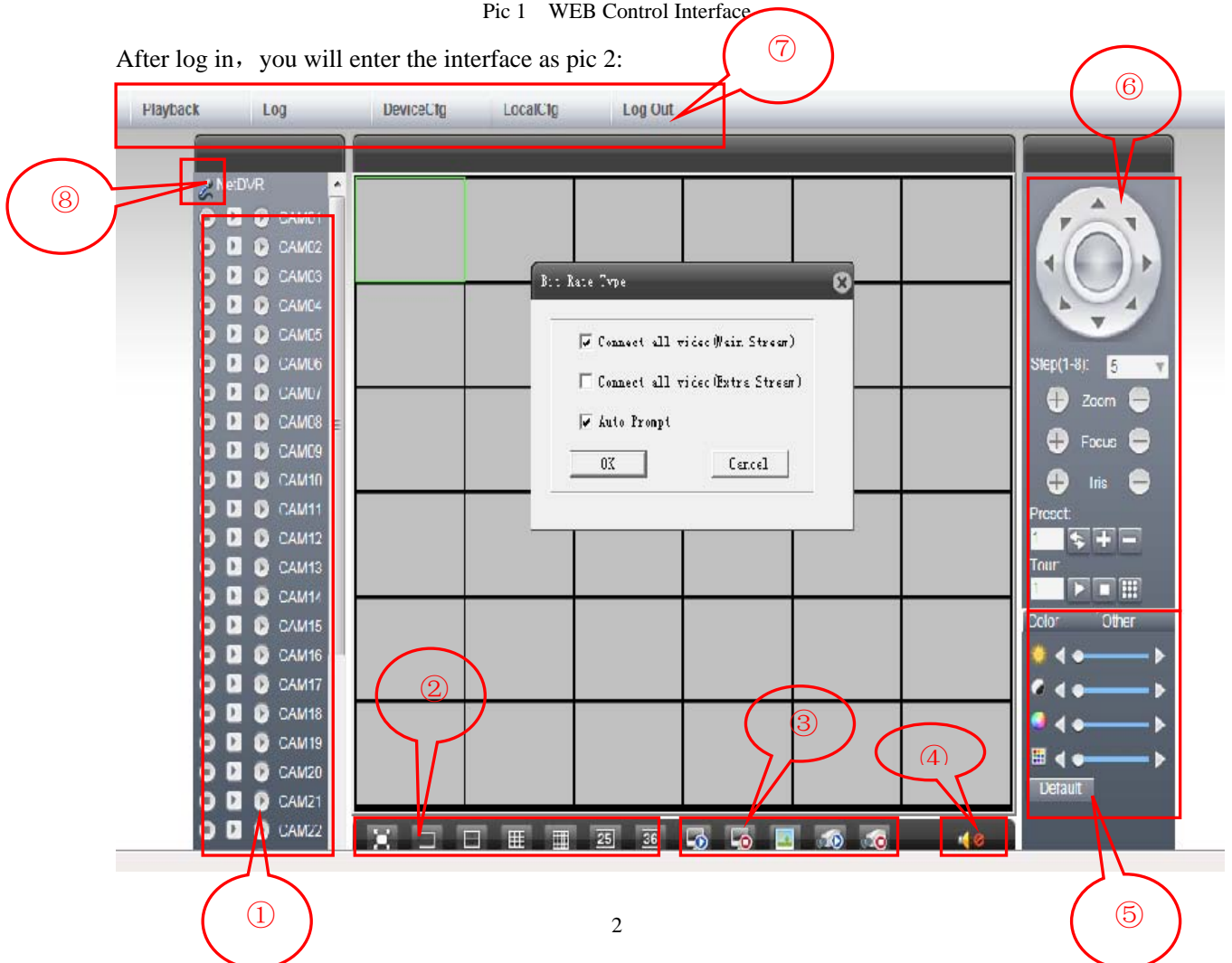
一 IE Web Log IN

Open IE browser and input with IP address,log in with user name and password, as pic1:



Pic 1 WEB Control Interface

After log in, you will enter the interface as pic 2:





Pic 2 : WEB Interface After Log In



二 IE Web Page Introduction



- | | |
|----------------------------------|----------------------------|
| ①——Monitoring Channel | ②——Monitoring window shift |
| ③——Shortcut keys operation | ④——Audio Settings |
| ⑤——Color Settings/Other Settings | ⑥——PTZ Control |
| ⑦——System Menu | ⑧——Voice Intercom |

2.1 Monitoring Channel



Click  “Main Stream”, can be connected to the main stream video, the key shows  , screen got will be as pic 5;

Click  “Extra Stream”, can be connected to the extra stream video, the key shows  ;

Click  “Remote Record”, to start video recording at remote side, the key shows  ; Video storage path can be revised at “System Menu”->“Client Side Settings”->“System Settings”.



Pic 4 WEB Video Monitor Screen

2.2 Monitoring Window Shift



To shift the monitoring window between full screen & single channel, when you are under full screen status, click right button can exit.

2.3 Shortcut Key Operation



—— Play full channel, can connect to main stream video or extra stream video;



—— Stop full channel, to stop main stream video or extra stream video;



—— Snapshot, click this key, to snapshot few pictures from video, Picture storage path can be revised at "System Menu" -> "Client Side Settings" -> "System Settings".



—— Full channel record, to start full channel video recording at client side;



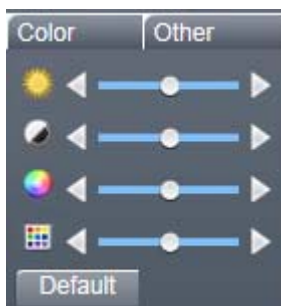
—— Stop full channel record, to stop full channel video recording at client side.

2.4 Audio Settings



To open & stop the audio of monitoring video.

2.5 Color settings/Other settings



Color setting:



—— Brightness Adjustment, to adjust the brightness of monitoring screen;



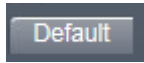
—Contrast adjustment, to adjust the contrast of monitoring screen;



—Saturation adjustment, to adjust the saturation of monitoring screen;



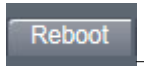
—Chroma adjustment, to adjust the chroma of monitoring screen;



—To restore the Brightness、 Contrast、 Saturation、 Chroma into default value.



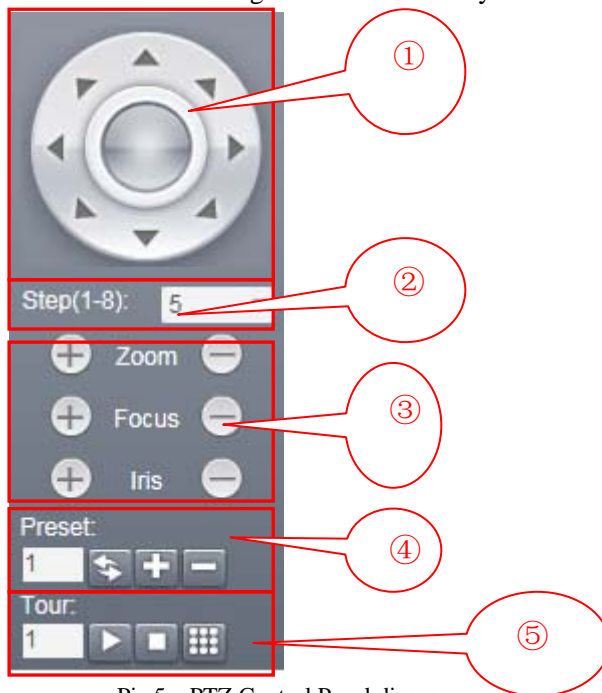
Other Settings:



—Can reboot the DVR.

2.6 PTZ Control Panel

Remark: Before operating PTZ Control Panel, user should set PTZ protocol in advance at System Menu->Device Configuration Moduel->System settings->PTZ settings.



Pic 5 PTZ Control Panel diagram

①—PTZ Direction

②—PTZ Step Length

③—Video Display Setings

④—Preset Point

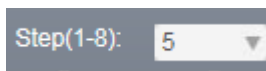
⑤—Cruise Between Points

2.6.1 PTZ Direction



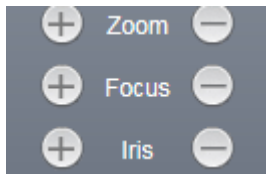
PTZ: Support 8 directions: Up、Down、Left、Right、Upper Left、Upper Right、Lower Left、Lower Right.

2.6.2 PTZ Step Length



Step length: mainly used for setting the rotation rate of PTZ, For example: Rotation rate of step length with 8 is quite larger than the one with step length of 1, Step length range is 1-8.

2.6.3 Video Display Control






Zoom: Used for the DVR that was connected with dome camera, can enlarge or reduce the override of video;

Focusing: Used for the DVR that was connected with dome camera, , can enlarge or reduce the focal length of video.

Diaphragm: Used for the DVR that was connected with dome camera, , can increase and reduce the diaphragm of video.

2.6.4 Preset Point



Turn the camera to the specific point through direction keys, then input the preset point value, and click“” to save it, or click“”to delete the preset point, and click“”to use this preset point.


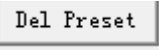
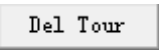
2.6.5 Cruise between points



To input cruise point No., click  edit key, enter Pic 6:



图 6 Cruise line editing interface

To select the specified preset point at the drop-down box , input time interval , click  , to add this preset point at at cruise line, click  , is to delete this preset point at cruise line, click  , is to delete the setted cruise line.

2.7 System Menu



1、Playback: Enter the playback **mode**, can base on the time and record mode to search or download video accordingly.;

2、Log: Show the log information of web client side;

3、Device-side configuration:

To remote setting the configuration of device-side accordingly, the setting will be synchronous to local device, including Recording、Alarm、System Setting、Management Tool、System Information etc. (Remark: Device can be setted only when it was connected successfully) ;

4、Client-side Configuration:

5、Alarm settings —— Set alarm on client-side, start remote network client interaction capabilities;

System Setting —— Set client-side record directory and snapshot directory ,etc.

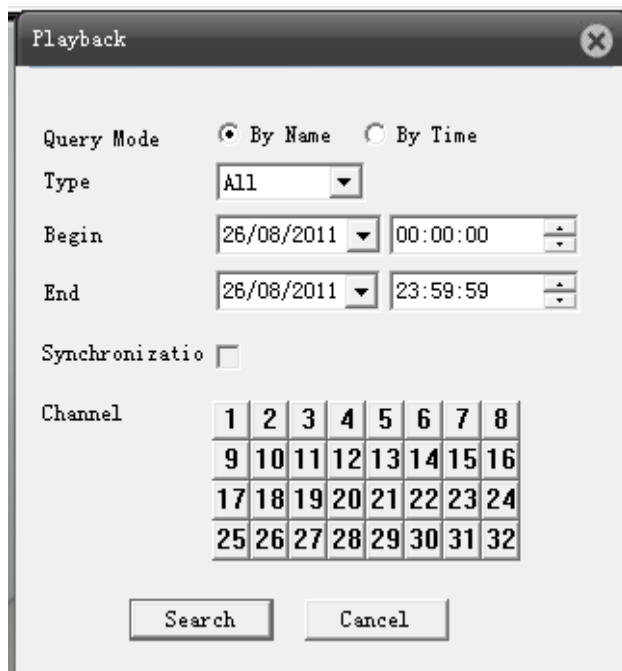
5、Exit: To close web client-side, return to log in interface.

2.7.1 Playback

Enter the playback mode at system menu from web page, to search related video after setting playback mode, video type、record parameter settings.

Operation in detail:

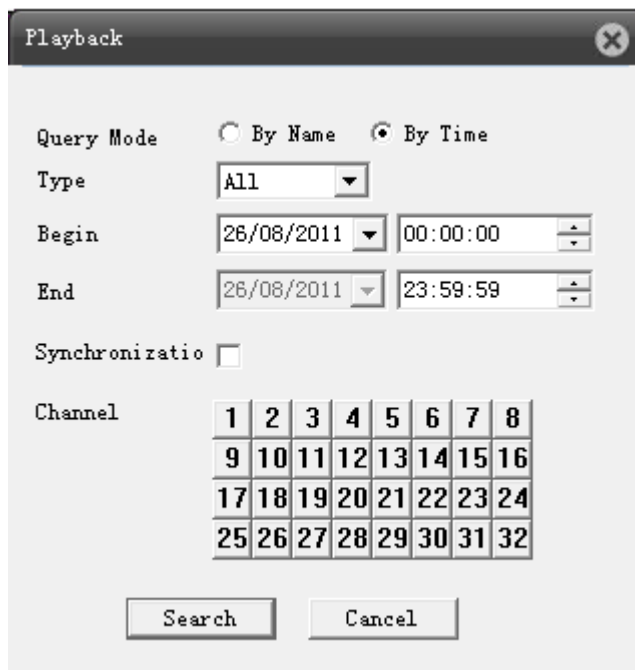
Step 1、Choose video playback mode, including by file and by time, if choose by file, the video search interface will be as pic7, if choose by time, the video search interface will be as pic 8.



The screenshot shows a 'Playback' dialog box with the following settings:

- Query Mode: By Name, By Time
- Type: All (dropdown)
- Begin: 26/08/2011 (date dropdown), 00:00:00 (time spinner)
- End: 26/08/2011 (date dropdown), 23:59:59 (time spinner)
- Synchronizatio:
- Channel: A 4x8 grid of buttons numbered 1 to 32.
- Buttons: Search, Cancel

Pic 7 Video search interface by file mode



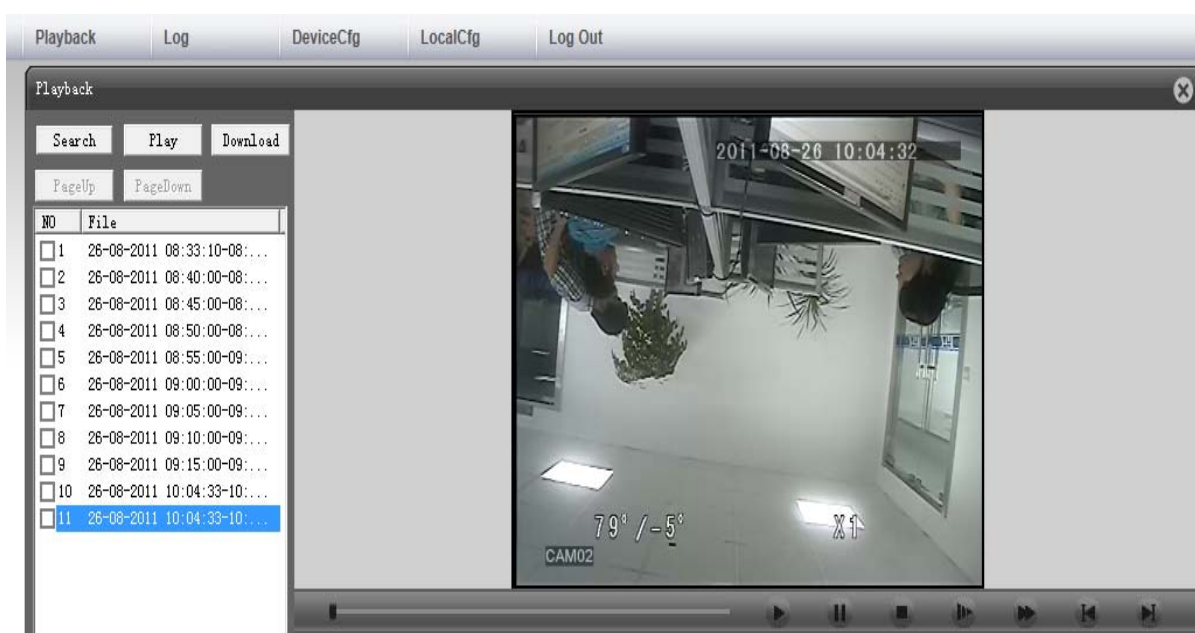
The screenshot shows a 'Playback' dialog box with the following settings:

- Query Mode: By Name, By Time
- Type: All (dropdown)
- Begin: 26/08/2011 (date dropdown), 00:00:00 (time spinner)
- End: 26/08/2011 (date dropdown), 23:59:59 (time spinner)
- Synchronizatio:
- Channel: A 4x8 grid of buttons numbered 1 to 32.
- Buttons: Search, Cancel

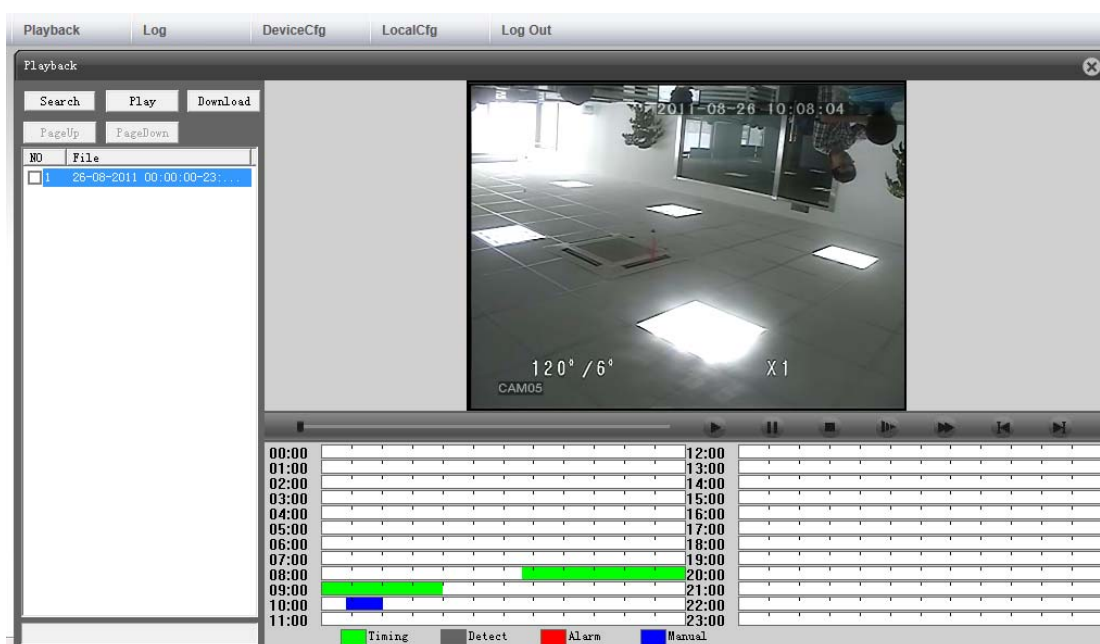
Pic 8 Video search interface by time mode

Step 2、Choose the playback mode, including All、 External Alarm、 Motion Detect、 General record、 Manual Recording、 All pictures、 Alarm Snapshot、 Motion Detect Snapshot、 Timming Snapshot and Manual Snapshot, set record period with beginning time and end time, under the playback mode of by time, you can choose whether to be synchronous, select the recording channel, then click **Search**, to enter the video playback and download interface;

Step 3、Choose the specified video from the file list, click **Play**, to playback this video at the playback window, Playback mode by file as Pic 9, Playback mode by time as Pic 10.



Pic 9 : Video playback mode "by file"

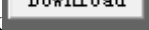


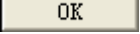
Pic 10 : Video playback mode "by time"

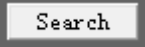
Remark:

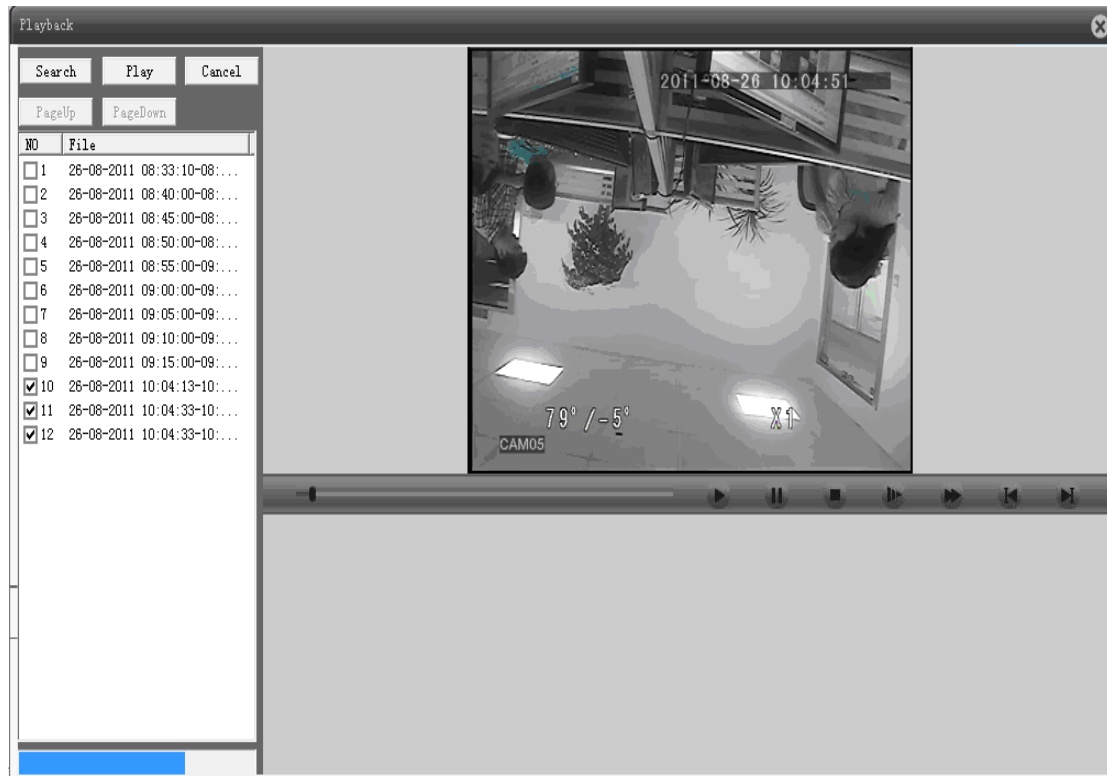
1、 When video is playing back, u can use the keys on the progress bar for below operations: such as play、 pause、 stop、 slow play、 fast play 、 previous frame、 next frame, and u can see the title and time of channel on the playback window.;

2、 If the playback mode is by time, there will be a window under the playback screen, shows the video type of each period, it was demonstrated with colors, each color stands for a type of video, double click the period with color, the video will shift to the specified period to playback.

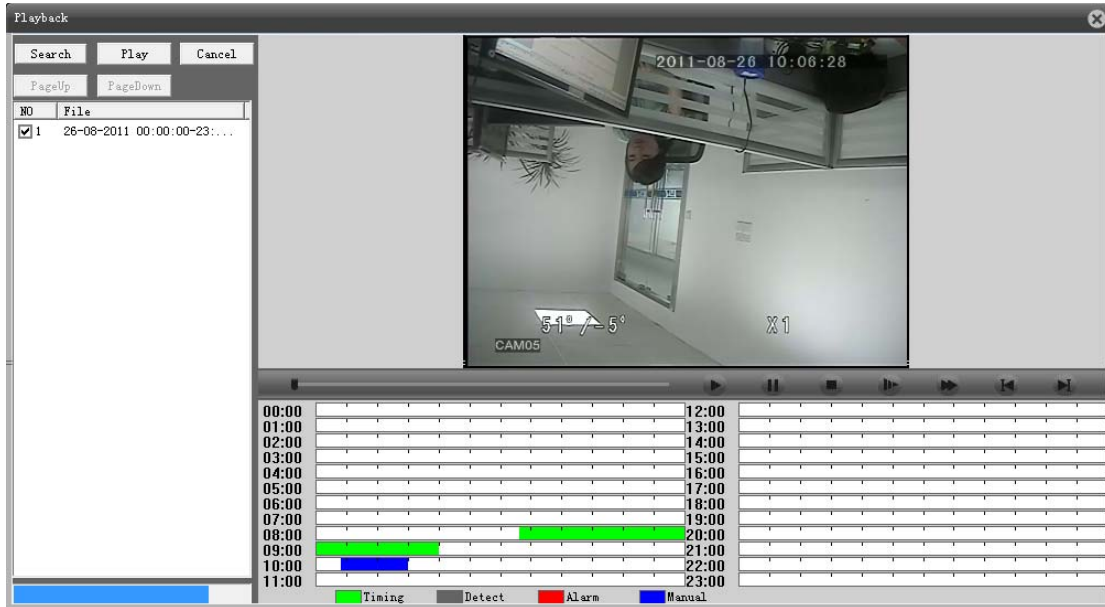
Step 4、 Choose the video that you want to download from the list, click  , under the playback mode of by file, will come out the file save window, set video name and storage path, click "Save", system will begin to download the video to PC, see pic 11; if under the playback mode of by time , will come out file save window, set video storage path, then click "Yes", system will begin to download video to PC, see pic12.

Step 5、 When it finished download, will come out "download finished", click  , to finish the whole download.

Remark: Both playback mode can support video download while it is playing back, click  at the playing back interface, can return to related video search interface.



Pic 11 Download and playback under mode of by file



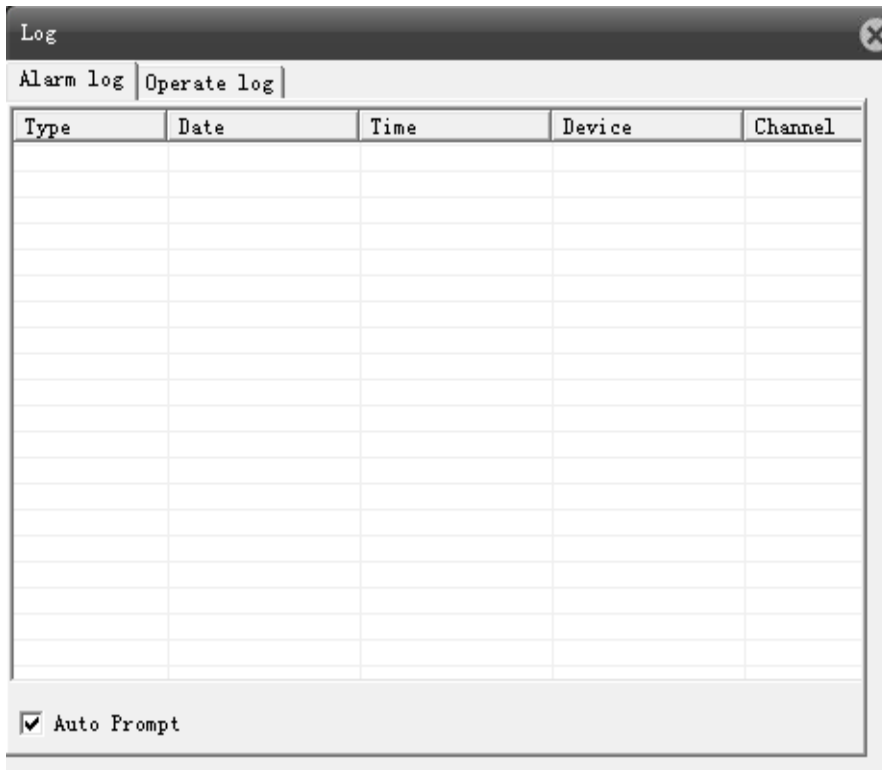
Pic 12 Download and play back under mode of by time

2.7.2 Log

To open the Log mode at system menu of web page, there will be log information window, including alarm log and operation log.

Alarm Log—— Need to set alarm and client-side, by triggering the device-side to alarm, enable remote web client-side linkage function, then there will be log information comes out.

Operating Log —— to show the operating log information of web client-side.



Type	Date	Time	User	Describe
Notify	2011-08-26	10:18:03	admin	10.6.5.16 Connect successful
Notify	2011-08-26	10:03:16	admin	10.6.5.16 Connect successful

Pic 13 Alarm log and operation log interface

2.7.3 Device setting.

To open the device configuration from system menu of WEB page, come out device setting window, including 5 parts: Record、Alarm、System Settings、Management Tools、System Information, you can set device on these interface, the settings will be synchronous to local device. (Remark: Device can be setted until it is connected successfully)

2.7.3.1 Record



Pic 14 Video Recording Window

Video record including record settings and picture storage, you can set the record status of device at record settings interface, set snapshot period and type at picture storage interface.

2.7.3.2 Alarm Settings



Pic 15 Alarm Setting Window

Alarm function including motion detect, video blind, video lost, alarm input & alarm output. You can set motion detect alarm data at motion detect interface, set video blind alarm at video blind interface, set video lost alarm at video lost interface, set external alarm at alarm input interface, search alarm output and alarm output interface.

2.7.3.3 System Settings



Pic 16 System Setting Window

System settings including General Settings, Encode, Network, Net service, Channel Title, PTZ and Serial Ports Settings. You can set time, video system etc at general setting interface, set encode capability and encode interface, set web site, video protocol at network interface, set net service parameter at net service interface, revise channel title and channel title interface, set PTZ control parameter at PTZ interface, set serial ports and PTZ function, baud rate, address etc at serial ports settings.

2.7.3.4 Management Tools



Pic 17 Management Tool Window

Management Tool including HDD manage, Account, Auto Maintain, Restore, Reboot and Upgrade. You can clear the data on HDD at HDD manage interface, can manage the account and account interface, can auto-reboot device and delete old data in auto maintain interface, can restore to default at restore interface, can reboot device at reboot interface, can upgrade system with flash stick at upgrade interface.

2.7.3.5 System Information



Pic 18 : System Information Window

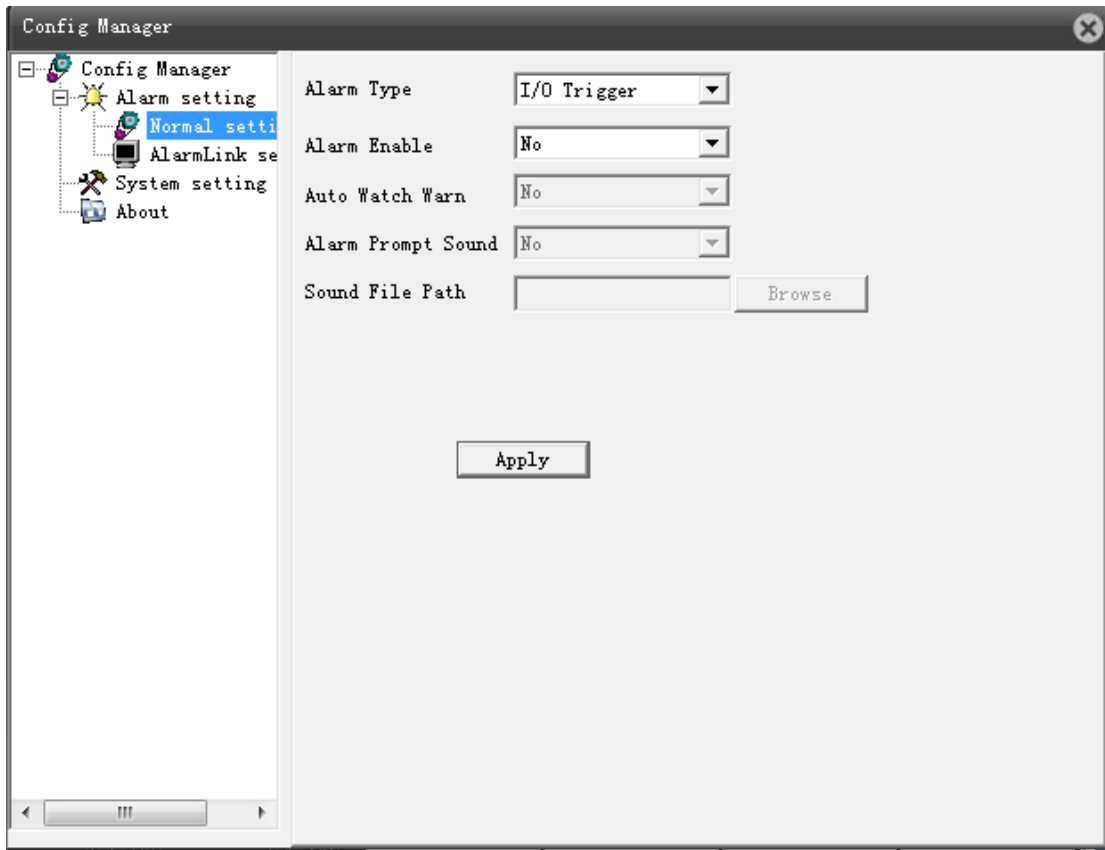
System information including HDD Information, Log Information, Version Information. You can review record time, HDD type and capacity at HDD Information interface, can review system log information at Log Information interface, can review system version information at version information interface.

2.7.4 Client-side Configuration

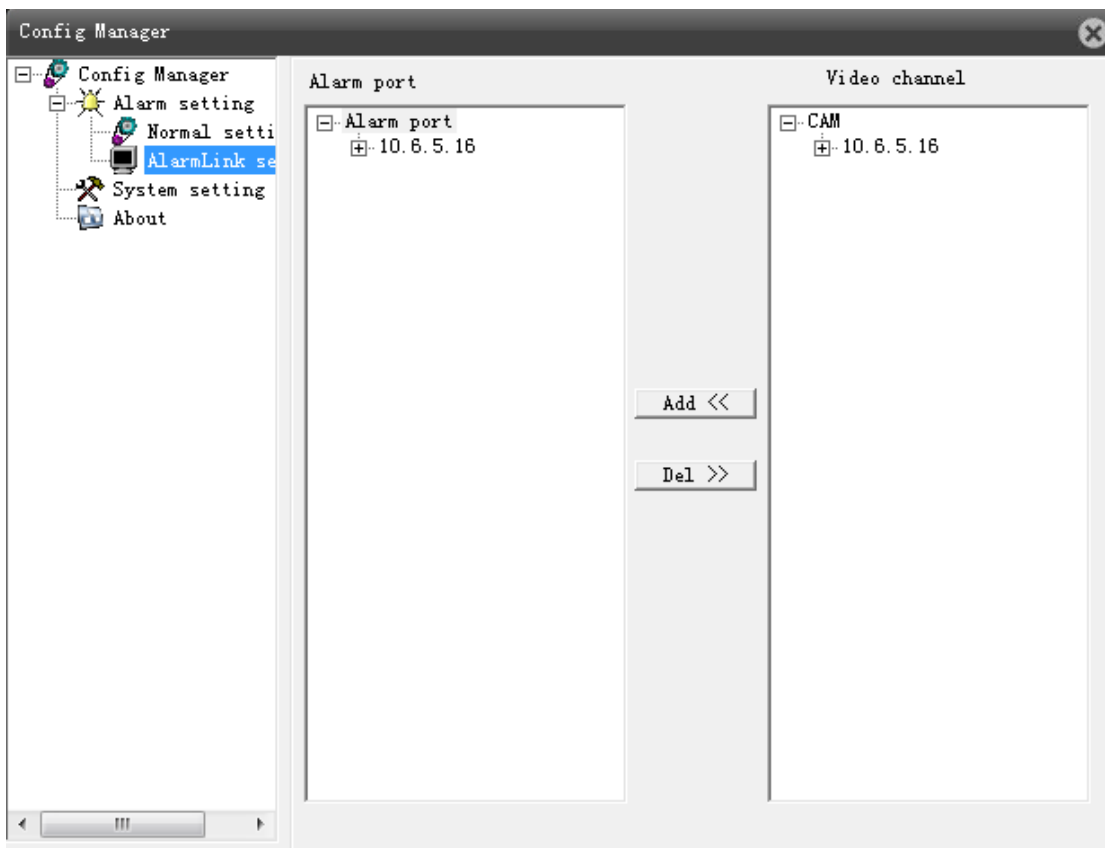
To open the client-side configuration at system menu from web page, including Alarm Settings, System Settings, and About.

2.7.4.1 Alarm Settings

Alarm Settings — to set device-side with alarm, enable the remote web client-side linkage function, including general settings and alarm settings. General setting is to choose alarm type, whether enables, click "apply" to save, as pic 19; alarm setting is to add or delete video channel, as pic 20.



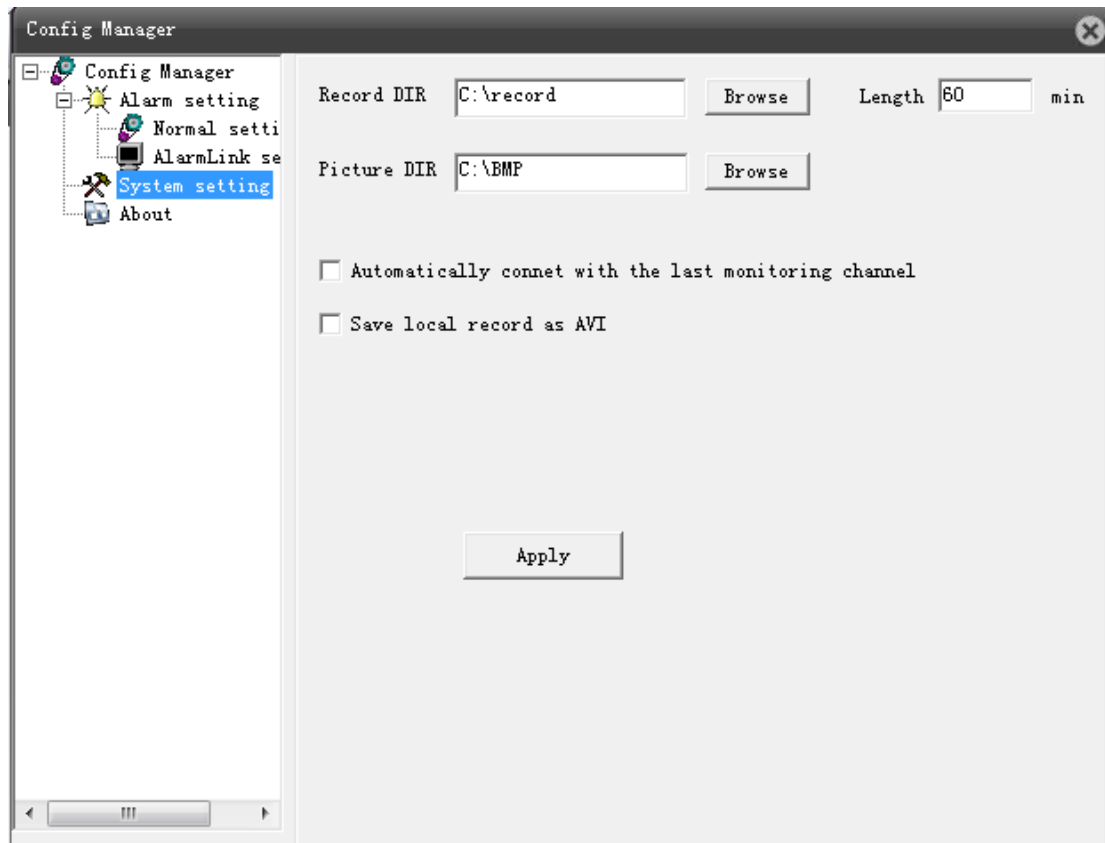
Pic 19 Alarm general settings interface



Pic 20 Alarm settings interface

2.7.4.2 System Settings

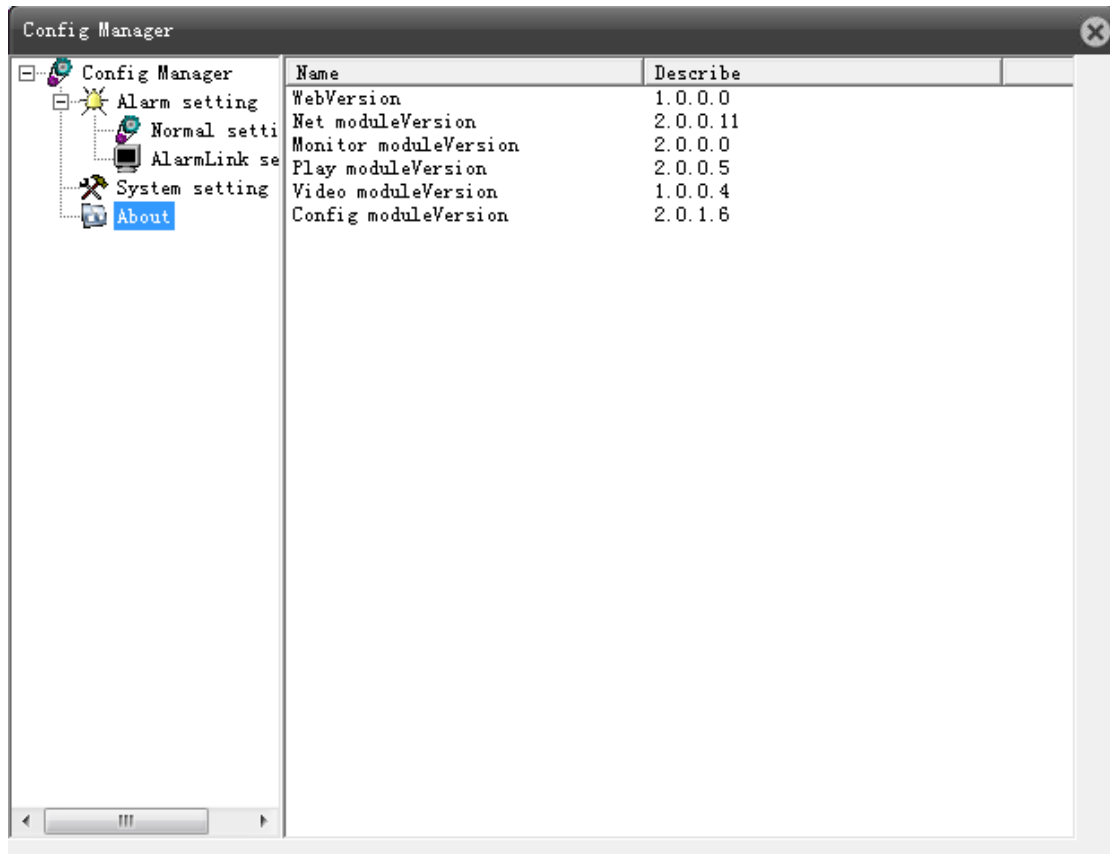
System Setting—— review and revise the catalogue of client-side video and snapshot, choose whether to enable the function of auto connect to previous monitoring channel, whether choose AVI as the format for local video storage, see pic21.



Pic 21 System Settings Window

2.7.4.3 About

You can got information of web version, network module version, player module version, playback module version, video module version and configuration module version at page 22.




Pic 22 Web module version information interface

2.7.5 Exit

Click "Exit" at system menu from web page, can close web client-side and return to the log in interface.

2.8 Voice Intercom



Click Voice Intercom, see pic , to start bidirectional talk, click it again, see pic



, Voice intercom was stopped.